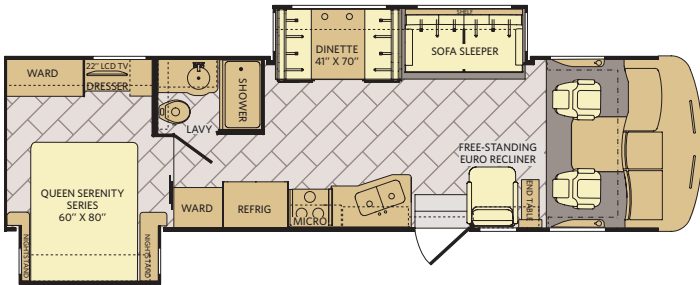


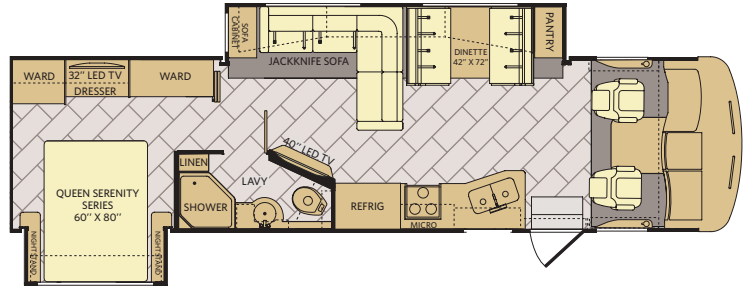
## TOP FEATURES

- Power Platform® Chassis Construction
- 12" X 24" Composite Tile Flooring Throughout
- Automotive Dash w/Passenger Workstation
- Power Awning w/LED Light Strip
- LED Lighting on Front Cap
- Blu-ray Surround Sound System
- Manual Day/Night Roller Shades
- Aluminum Bus-Style Side Swing Luggage Doors
- 1200 Watt Inverter (32VS) 2000 Watt Inverter (34A, 36L)
- Energy Management System

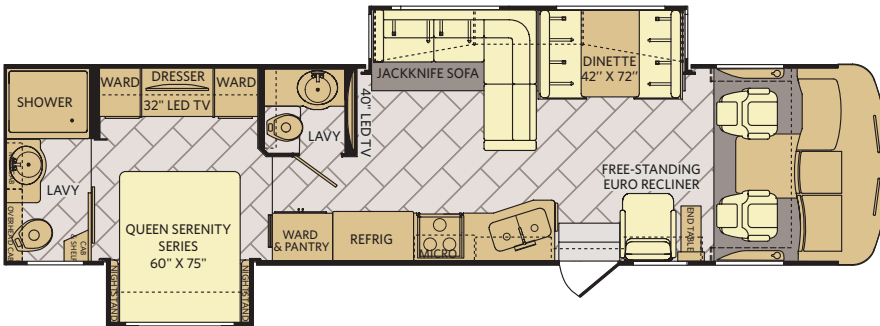
32VS Options: 087, 113, 192, 345, 490, 830, 833, 855



34A Options: 087, 093, 113, 126, 139, 830, 833, 852, 855



36L Options: 087, 093, 113, 126, 490, 830, 855



### Available Options

OPT. 087  
FRONT 32"  
LED TV

OPT. 093  
EXTERIOR  
ENTERTAINMENT  
CENTER

OPT. 113  
3-BURNER  
COOKTOP  
W/OVEN

OPT. 126  
WASHER  
/DRYER

OPT. 139  
ELECTRIC  
FIREPLACE

OPT. 345  
MID-SHIP 40"  
LED TV

OPT. 490  
FREE  
STANDING  
RECLINER

OPT. 192  
SOFA SLEEPER  
W/AIR MATTRESS  
& FOOTREST

OPT. 830  
FACING DINETTE

OPT. 833  
FREE-STANDING  
DINETTE  
WITH CRENZNA

OPT. 852  
KING BED  
72" X 80"

OPT. 855  
QUEEN BED  
w/ AIR  
60" X 75"

## DÉCOR CHOICES

### Autumn Wheat

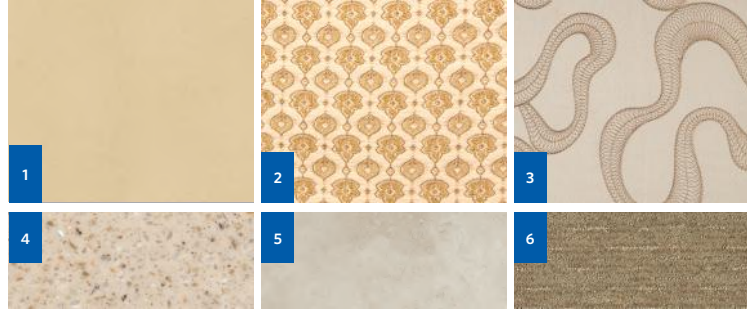


### Nottingham Cherry

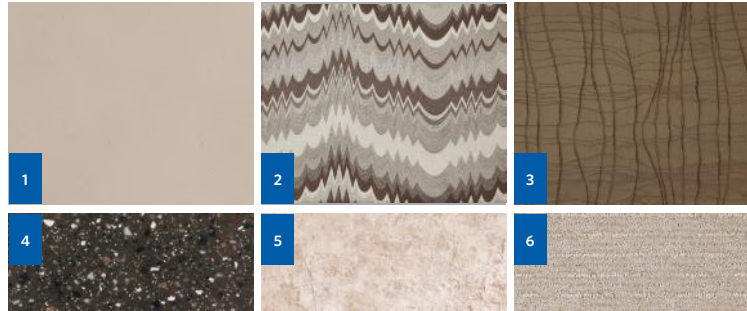


1 | Sofa 2 | Accent 3 | Bedspread 4 | Countertop 5 | Flooring 6 | Carpet

### Champagne Shimmer



### Milky Way



## EXTERIOR CHOICES

### Champagne Shimmer



### Milky Way



### Pewter Mist



## CHASSIS

MODEL	32VS	34A	36L
Wheelbase (inches)	208"	208"	228"
GVWR (lbs) <sup>1</sup>	22,000	22,000	22,000
Front GAWR (lbs) <sup>2</sup>	8,000	8,000	8,000
Rear GAWR (lbs) <sup>2</sup>	15,000	15,000	15,000
GCWR (lbs) <sup>3</sup>	26,000	26,000	26,000
Hitch Rating Weight (lbs) <sup>†</sup>	5,000	5,000	5,000
Tongue Weight (lbs) <sup>*</sup>	500	500	500
Fuel Capacity (gal)	80	80	80

## DIMENSIONS AND CAPACITIES

MODEL	32VS	34A	36L
Overall Length (inches) <sup>4</sup>	33' 5"	34' 11"	36' 11"
Overall Height (with A/C)	12' 10"	12' 10"	12' 10"
Overall Width (maximum) <sup>5, 6</sup>	102"	102"	102"
Interior Height (maximum)	84"	84"	84"
Interior Width (maximum)	96"	96"	96"
Patio Awning Width	17'	17'	17'
Interior Storage (cu. ft.)	144	123	140
Exterior Storage (cu. ft.)	112	115	118
Fresh Water Holding Tank (gal)	80	80	80
Grey Water Holding Tank (gal)	58	58	58
Black Water Holding Tank (gal)	42	42	42
Appliance Propane Tank (gal) (WC) <sup>7</sup>	25	25	25
Water Heater Tank (gal)	10	10	10

## POWER PLATFORM® CHASSIS

Model: Ford  
 Engine: 6.8L Triton V10  
 Transmission: Ford 6-Speed w/  
 Automatic Overdrive

Alternator: 175 Amp  
 Torque: 460 lb.-ft. @ 3,000 RPM  
 Horsepower: 320 HP @ 3,900 RPM

### Addendums

- GVWR (Gross Vehicle Weight Rating) is the maximum permissible weight of this fully loaded motorhome. The GVWR is equal to or greater than the sum of the (UVW) unloaded vehicle weight plus the (OCCC) occupant cargo-carrying capacity\*.
- GAWR (Gross Axle Weight Rating) is the maximum permissible loaded weight a specific axle is designed to carry.
- GCWR (Gross Combined Weight Rating) is the value specified by the motorhome manufacturer as the maximum allowable loaded weight of this motorhome with its towed vehicle. Towing and braking capacities may be different. Refer to Fleetwood and chassis manufacturer's manuals for complete information.
- Length measured from front bumper to rear bumper (excludes accessories).
- Excludes safety equipment and awnings.
- Motorhomes feature a body width over 96" which will restrict your access to certain roads. Before purchasing, you should research any state and/or province road laws which may affect your usage.
- Tank manufacturer's listed water capacity (WC). Actual propane capacity is 80% of water listing as required by the safety code.

† The chassis manufacturer recommends the installation of a supplemental brake control system to activate the brakes on the vehicle or trailer you are towing. Hitch receiver ratings expressed are maximum for the hitch receiver installed and may require the purchase of additional equipment that is dependent on the weight of the towed load. Consult with hitch receiver manufacturer for further information.

\* UVW and OCCC are found on the label containing the federal certification tag in each RV.

†† The Minimum Towable Load of this vehicle is the available weight capacity, up to GCWR, when the coach is fully loaded to maximum GVWR. However, if the coach is loaded to something less than maximum GVWR, that extra available weight capacity can be added to your Towable Load. For example, if your coach is loaded to 1000lbs less than maximum GVWR, your Towable Load increases accordingly. Do not exceed the hitch rating weight, GVWR or GCWR.

### IMPORTANT—PLEASE READ

Product information, photography and illustrations included in this publication were as accurate as possible at the time of printing. For further product information and changes, please visit our website at [www.fleetwoodrv.com](http://www.fleetwoodrv.com) or contact your local Fleetwood RV dealer. Prices, materials, design and specifications are subject to change without notice. All weights, fuel, liquid capacities and dimensions are approximate. Fleetwood RV has designed its recreational vehicles to provide a variety of uses for customers. Each vehicle features optimal seating, sleeping, storage and fluid capacities. The user is responsible for selecting the proper combination of loads (i.e., occupants, equipment, fluids, cargo, etc.) to ensure that the vehicle's capacities are not exceeded.

### CONTACT US

To locate a dealer near you, visit our website at [www.fleetwoodrv.com](http://www.fleetwoodrv.com) or call 1-800-322-8216. We can also be contacted at Fleetwood RV Customer Relations, P.O. Box 1007, Decatur, IN 46733.

\*\* All 2017 REV Recreation Group motorhomes include a limited one-year/15,000-mile coach warranty and three-year/45,000-mile structural warranty, whichever occurs first, and is fully transferable for the first 12 months.